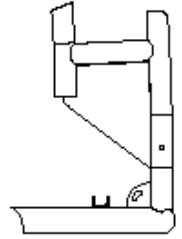
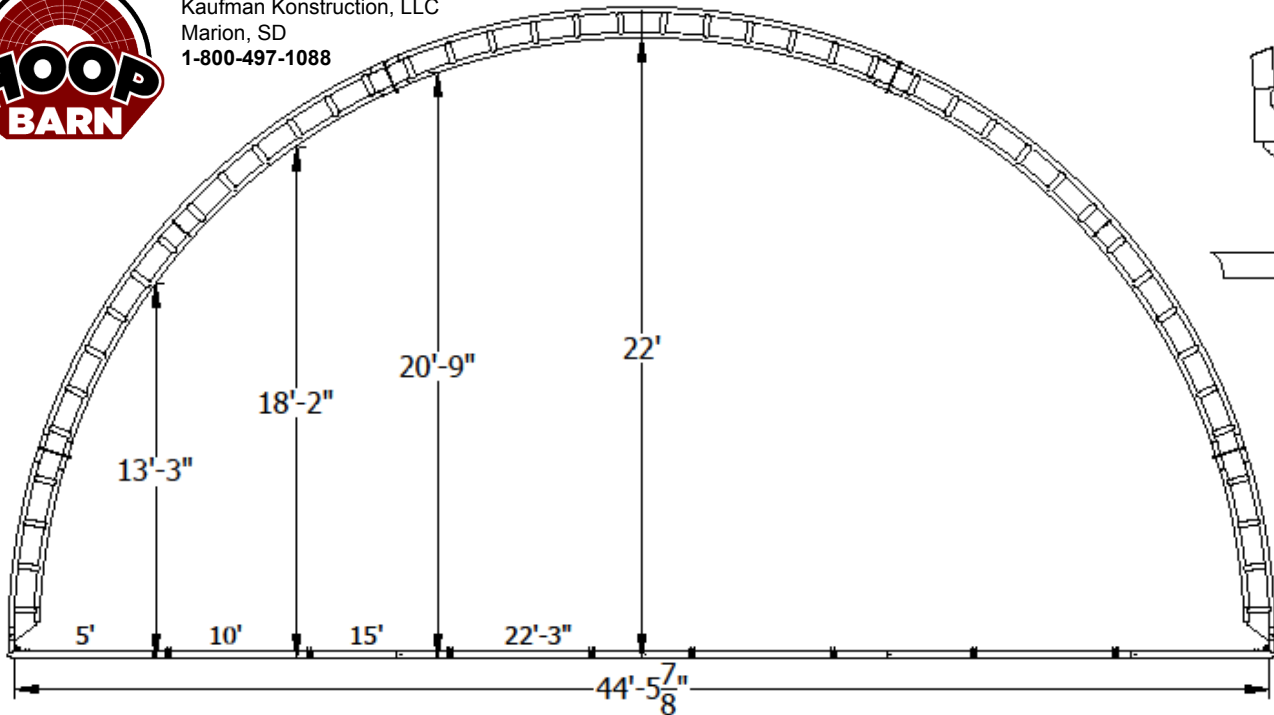




HoopBarn.com
Kaufman Konstruktion, LLC
Marion, SD
1-800-497-1088



FRAME COMPONENTS

RAFTERS: Welded truss construction with 2 3/8-inch **12 gauge** top and bottom chords.

RAFTERS AND PURLINS: "X" and/or straight bracing configured to application.

RAFTER SPACING: 10-foot standard.

GROUND MOUNT MODELS: Designed to be installed on any solid flat surface. Building utilizes a 3" track (round tube) around the perimeter with 8" x 3' auger ground anchors for fastening.

Included: assembly bolts, lashing winches with mounting brackets, etc.

Not included: posts, rub rail, or concrete anchors.

FABRIC COVER

FABRIC: 12.5 oz tear resistant high density polyethylene with reinforced corners and pockets.

COLORS: White, Blue, Green, Red, Tan, Silver, Frost/translucent.

Available as solid colors (some colors may be up charged), with colored canastoga ends or stripes.

TENSIONING: Pipe and 1" ratchet every 5'

Standard wind tension kit (first and last bay of building) includes PVC pipe with ratchet every 36"

AVAILABLE OPTIONS

END WALLS: Steel uprights with fabric cover; pipe and 1" ratchets for tension

END WALL SUPPORTS: Includes framework for overhead door and walk-thru door

HEADERS & DOORS: Door headers up to 20'. Fabric doors available (call for price)

END WALL VENTS: 4' x 2' mesh vents with weather flap available for end walls

