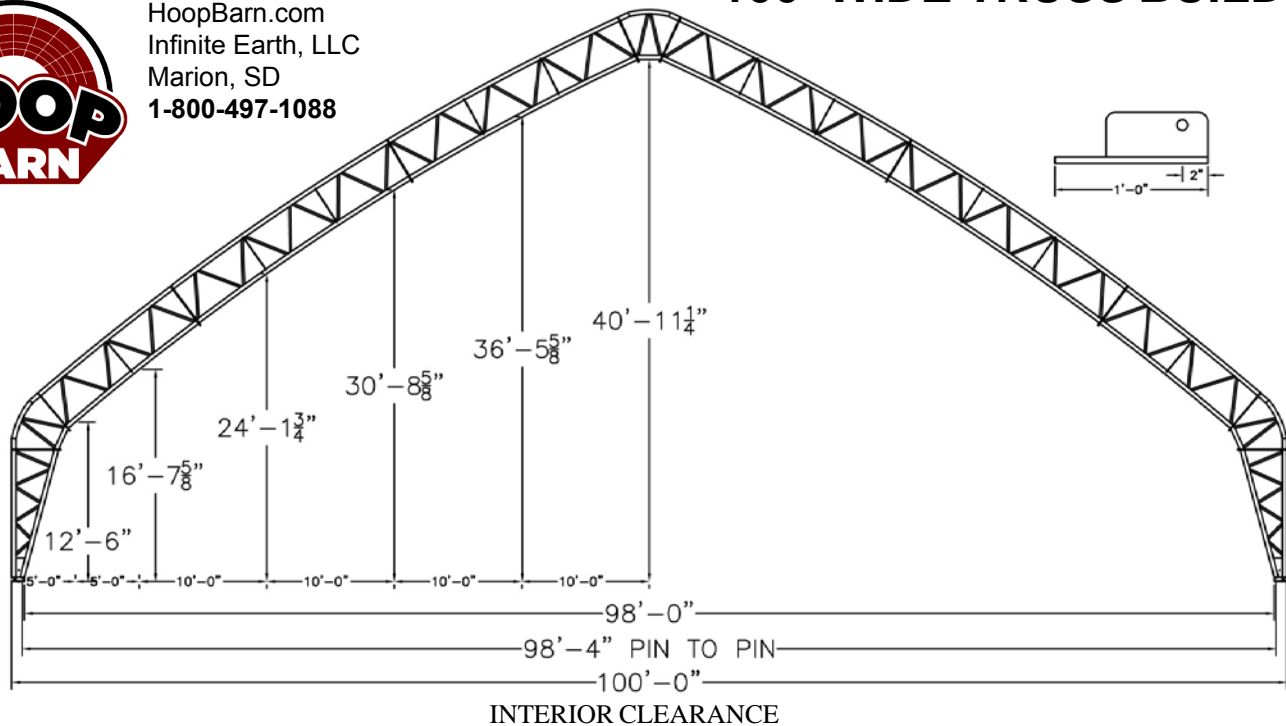




HoopBarn.com
 Infinite Earth, LLC
 Marion, SD
 1-800-497-1088



FRAME COMPONENTS

RAFTERS: Welded truss construction with 4-inch 12 gauge & 4-inch 10 gauge top and bottom chords.

RAFTERS AND PURLINS: Straight and/or "X" bracing configured to application

RAFTER SPACING: Offered in 8-foot, 10-foot, and 14-foot truss spacing depending on local codes

PONY WALL MODELS: Designed to be set on concrete, or steel, with standard pivot bracket. **Note:** also available in flush mount and ground mounted units.

Included: assembly bolts, lashing winches with mounting brackets.

Not included: posts, rub rail, or concrete anchors.

FABRIC COVER

FABRIC: 12.5 oz tear resistant high density polyethylene with individual keder panels with snap cap.

COLORS: White, Blue, Green, Red, Tan, Silver, Frost/translucent.

TENSIONING: Pipe and 2" lashing winch at each truss.

AVAILABLE OPTIONS

END WALLS: Steel uprights with fabric cover; pipe and 2" lashing winch tensioning.

END WALL SUPPORTS: Our standard uprights with tabs for customer supplied girts and skin.

HEADERS & DOORS: Door headers available. Fabric roll-up doors available.

RIDGE VENTS: 8X16 top vent holes, partial or entire length of building.

AWNING: 5ft awning greatly extends weather protection for buildings with feed-bunks or open sides.

SIDE CURTAINS: Roll-Up curtain to allow ventilation or wind protection. Electric curtain option available.

