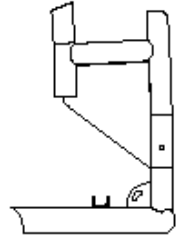
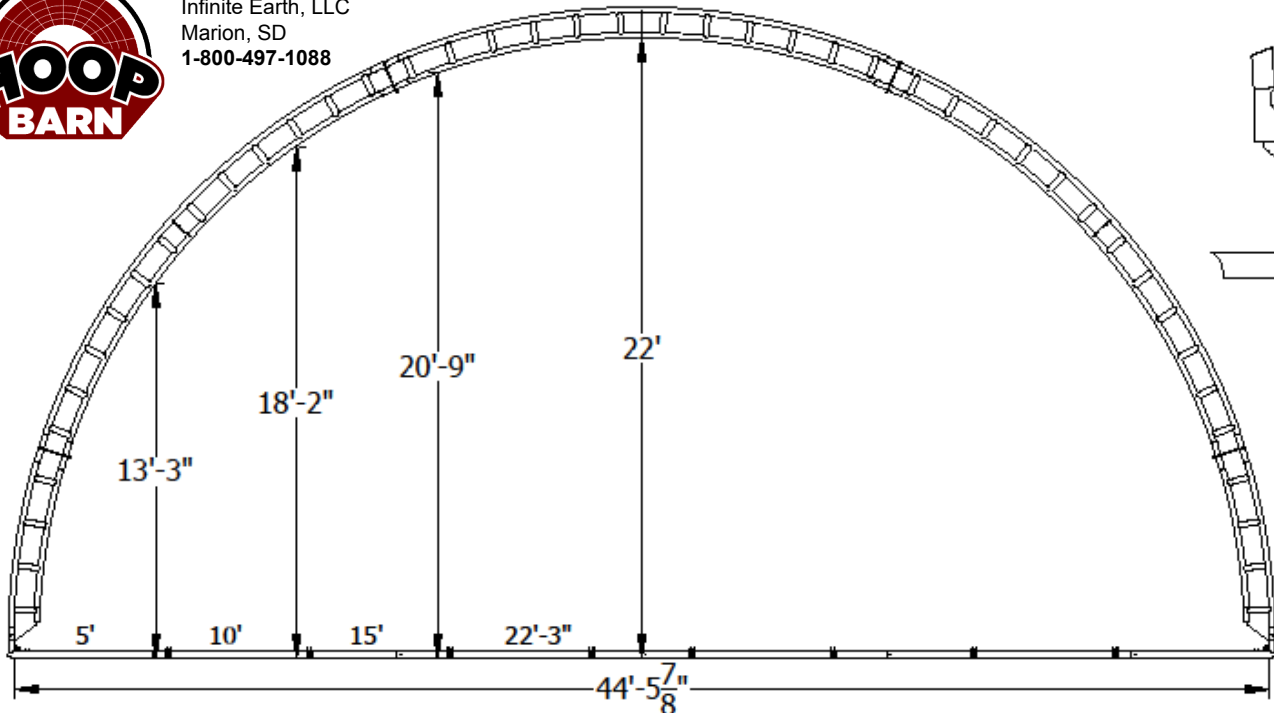




HoopBarn.com  
Infinite Earth, LLC  
Marion, SD  
1-800-497-1088



### FRAME COMPONENTS

**RAFTERS:** Welded truss construction with 2 3/8-inch **12 gauge** top and bottom chords.

**RAFTERS AND PURLINS:** "X" and/or straight bracing configured to application.

**RAFTER SPACING:** 10-foot standard.

**GROUND MOUNT MODELS:** Designed to be installed on any solid flat surface. Building utilizes a 3" track (round tube) around the perimeter with 8" x 3' auger ground anchors for fastening.

**Included:** assembly bolts, lashing winches with mounting brackets, etc.

**Not included:** posts, rub rail, or concrete anchors.

### FABRIC COVER

**FABRIC:** 12.5 oz tear resistant high density polyethylene with reinforced corners and pockets.

**COLORS:** White, Blue, Green, Red, Tan, Silver, Frost/translucent.

Available as solid colors (some colors may be up charged), with colored canastoga ends or stripes.

**TENSIONING:** Pipe and 1" ratchet every 5'

Standard wind tension kit (first and last bay of building) includes PVC pipe with ratchet every 36"

### AVAILABLE OPTIONS

**END WALLS:** Steel uprights with fabric cover; pipe and 1" ratchets for tension

**END WALL SUPPORTS:** Includes framework for overhead door and walk-thru door

**HEADERS & DOORS:** Door headers up to 20'. Fabric doors available (call for price)

**END WALL VENTS:** 4' x 2' mesh vents with weather flap available for end walls

