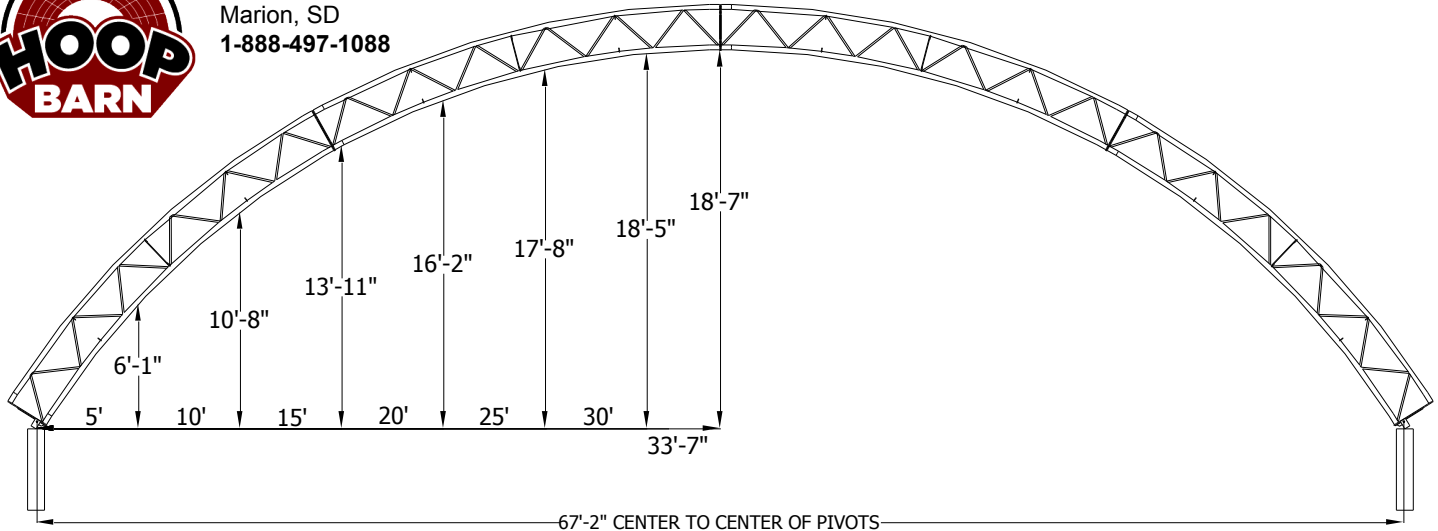




HoopBarn.com
 Infinite Earth, LLC
 Marion, SD
 1-888-497-1088



FRAME COMPONENTS

RAFTERS: Welded truss construction with 3-inch **12 gauge** top and bottom chords.

RAFTERS AND PURLINS: "X" and/or straight bracing configured to application.

RAFTER SPACING: 14-foot standard; 8-foot and 10-foot spacing available.

PONY WALL MODELS: Designed to be set on wood or concrete, with standard pivot bracket. Walls must be at least 24-inches high to allow for tensioning.

Note: also available in flush mount and ground mounted units with wider interior clearance.

Included: assembly bolts, lashing winches with mounting brackets.

Not included: posts, rub rail, or concrete anchors.

FABRIC COVER

FABRIC: 12.5 oz tear resistant high density polyethylene with reinforced corners and pockets.

COLORS: White, Blue, Green, Red, Tan, Silver, Frost/translucent.

Available as solid colors (some colors may be up charged), with colored canastoga ends, or stripes.

TENSIONING: Pipe and 2" lashing winch at each truss.

Standard end tension kit with ratchets spaced at 36"; high tension kit available.

AVAILABLE OPTIONS

END WALLS: Steel uprights with fabric cover; pipe and 2" lashing winch tensioning.

END WALL SUPPORTS: Our standard uprights with tabs for customer supplied girts and skin.

HEADERS & DOORS: Door headers up to 16ft. Fabric roll-up doors available.

RIDGE VENTS: 8X16 top vent holes, partial or entire length of building.

AWNING: 5ft awning greatly extends weather protection for buildings with feed-bunks or open sides.

SIDE CURTAINS: Roll-Up curtain to allow ventilation or wind protection.

